

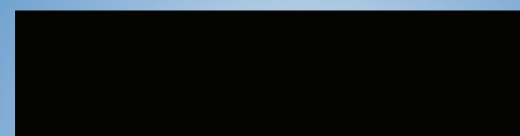
Aspect 100RTL, 100RT, 100T and 100E

GI / Pain Management / Multipurpose Imaging Table Specifications

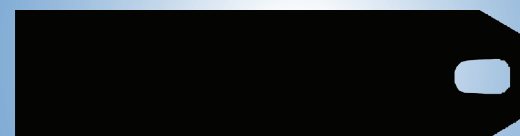
Model Number	Aspect 100RTL	Aspect 100RT	Aspect 100T	Aspect 100E
Elevate (tabletop to floor)	31.2 - 41.2" 79 - 105 cm	30.4 - 42.2" 77 - 107 cm	28 - 39.8" 71 - 101 cm	27 - 38.8" 68 - 98 cm
Trendelenburg Tilt	±15°	±15°	±15°	NA
Lateral Roll	20°	20°	NA	NA
Longitudinal Tabletop Motion	10" 25 cm	NA	NA	NA
Standard Tabletop Size	24" x 80" 61 x 203 cm	24" x 80" 61 x 203 cm	24" x 80" 61 x 203 cm	24" x 80" 61 x 203 cm
Optional Tabletop Size	22" x 80" 56 x 203 cm	22" x 80" 56 x 203 cm	22" x 80" 56 x 203 cm	22" x 80" 56 x 203 cm
Custom Tabletop Size	28" x 80" 71 x 203 cm	28" x 80" 71 x 203 cm	28" x 80" 71 x 203 cm	28" x 80" 71 x 203 cm
Imaging Area	59" 150 cm	62" 157 cm	62" 157 cm	66" 168 cm
Patient Capacity	450 lbs 204 kgs	450 lbs 204 kgs	450 lbs 204 kgs	450 lbs 204 kgs
Table Weight	355 lbs 161 kgs	380 lbs 172 kgs	325 lbs 147 kgs	290 lbs 132 kgs
Standard (S) and Optional (O) Accessories				
Tabletop Pad 2" (5cm) thick	S	S	S	S
Hand Control	S	S	S	S
Facial Support Pad	S	S	S	S
Restraint Straps	S	S	S	S
Casters 5" (12,7 cm)	S	S	S	S
Armboard, rail mounted	O	O	O	O
Armboard, shoulder mount	O	O	O	O
Table-Mounted Radiation Shield	O	O	O	O
Foot Control	O	O	O	O
Clamp-on Accessory Rail	O	O	O	O

Tabletop Options

Standard Top
Cat. # X100-995 24" x 80"
(61 cm x 203 cm)



Optional Top
Cat. # X100-733
22" x 80" (56 cm x 203 cm)
with facial cutout



Custom Top
Cat. # X100-1325
28" x 80" (71 cm x 203 cm)
For larger patients

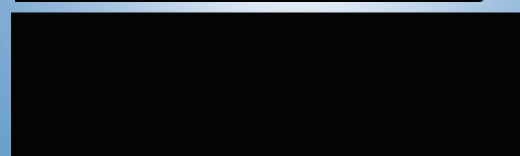


Image Diagnostics, Inc. reserves the right to update product specifications without notification. Aspect is a registered trademark of Image Diagnostics, Inc.

Image Diagnostics, Inc. 310 Authority Drive
Fitchburg, MA 01420 USA
(877) 304-5434 imagediagnostics.com

Certifications: ETL listed to UL 60601-1, EN 60601-1,
IEC 60601-1, IEC 60601-2-32, IEC 60601-2-46
and CAN/CSA C22.2 No. 601.1-M90.
Made in USA. L100-2924C

ASPECT™ 100RTL 100RT 100T & 100E

GI / Pain Management / Multipurpose Imaging Tables



The Smart Choice:

- For GI and pain management procedures
- Choose from tables with 4-way, 3-way, 2-way and elevate only motions
- Choice of three tabletops
- Patient weight capacity: 450 lbs (204 kgs)
- Unobstructed imaging area 59" (150 cm)



Aspect 100RTL shown with
IDI's ilex55 video integration system

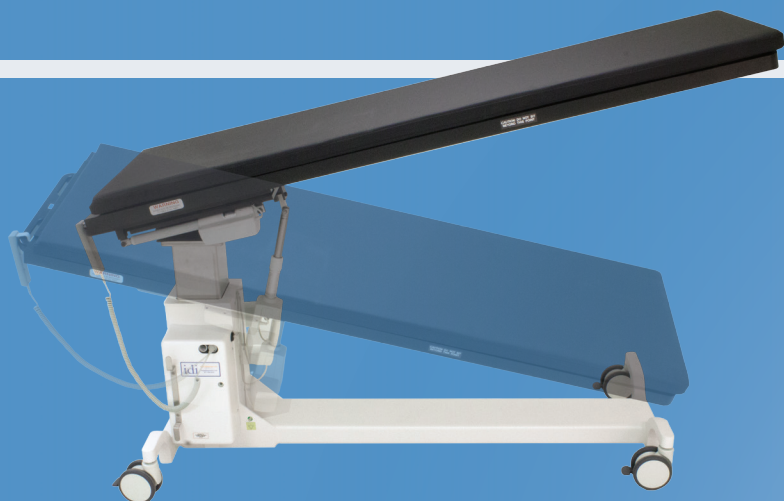
idi

Image Diagnostics, Inc.
Veteran owned - Made in the USA

Aspect™ Series C-Arm Imaging Tables

100RTL, 100RT, 100T, and 100E

These tables include your choice of a 22" (56 cm) , 24" (61 cm) or 28" (71 cm) tabletop



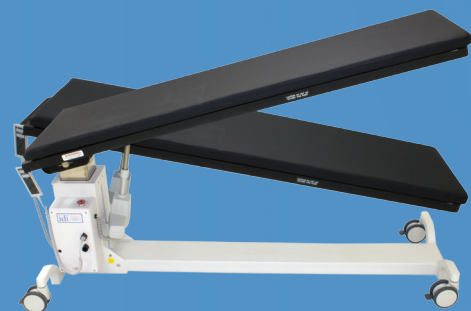
Aspect 100RTL

- Motorized elevation
- Lateral Tilt (Roll) ±20°
- Trendelenburg Tilt ±15°
- 10" (25 cm) Longitudinal Travel



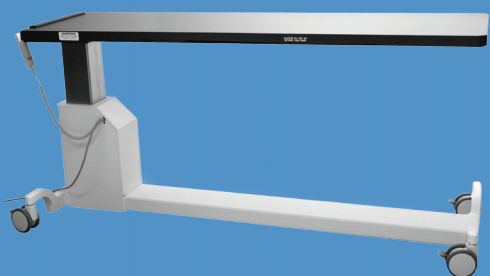
Aspect 100RT

- Motorized elevation
- Lateral Tilt (Roll) ±20°
- Trendelenburg Tilt ±15°



Aspect 100T

- Motorized elevation
- Trendelenburg Tilt ±15°



Aspect 100E

- Motorized elevation

Advantages of the Aspect Series Tables

- Very large unencumbered imaging areas: 59" – 66" (150 – 168 cm), depending on model.
- Low profile wheel base design and robust lift column for:
 - ✓ Excellent stability and safety.
 - ✓ Very low table weight for reduced freight shipment costs, easy maneuverability: 290 – 380 lbs (132 – 172 kgs), depending on model.
 - ✓ Long base provides protection from collisions that can damage carbon fiber tabletop.
 - ✓ 450 lbs (204 kgs) "true" patient weight capacity; based on real patient positioning and over the entire range of tabletop positions.
 - ✓ Enclosed, easy-to-clean base and covers.
- High-quality, carbon fiber tabletops and tabletop pads for excellent fluoroscopic imaging with minimal x-ray attenuation.
- Multiple tabletop sizes and shapes to satisfy application-specific clinical requirements.
- Highest quality components for exceptional durability and reliability. Three year parts warranty. One year labor warranty.
- 120V AC operation (230V optional) with internal battery back-up operation. Less than 10 amps required.

Image Diagnostics

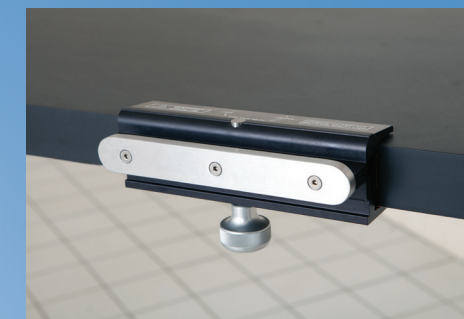
Since 1986, IDI has been a manufacturer of innovative products for surgical, interventional and diagnostic imaging.

Our product focus is in electro-mechanical solutions for fluoroscopic and digital radiographic applications.

IDI is committed to superior product design, value and customer support in everything we do.

Key table accessories

See IDI Table Accessories Catalog for complete accessory options



Clamp-on Accessory Rail

For mounting armboard and other rail-mounted accessories.

Cat. # A100-1007



Armboard

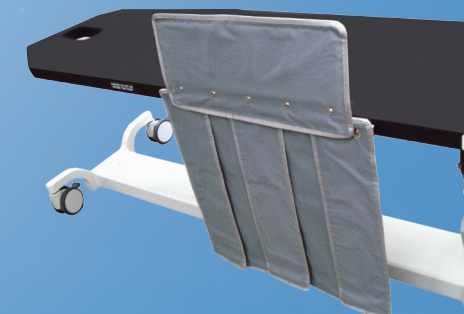
Quick release, rail-mounted

Cat. # A310-056



Scatter-Guard Radiation Draping

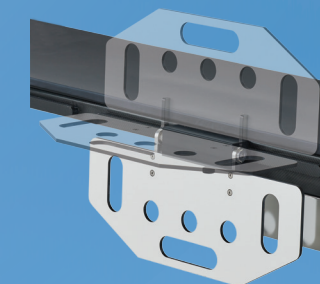
Cat. # A610-096 for X100-995 tabletop
Cat. # A610-092 for X100-733 tabletop



Radiation Shield

For Aspect 100T, 100RT and 100RTL tables

Cat. # A610-080



Multi-position Arm Support

Arm rest, removable and tiltable Provides secure patient support.

Cat. # C000-1180