

# 100-4T G3 Optional Accessories



**Headrest extension**  
Articulating carbon fiber headrest, Attaches to the imaging end of the standard tabletop.



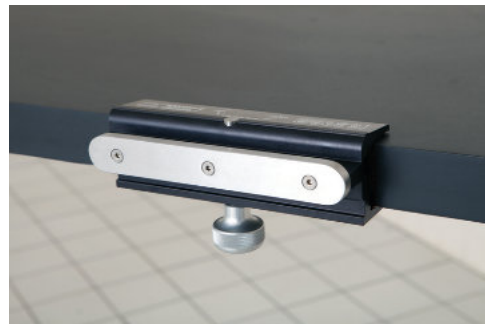
**Armboard**  
Quick-release, rail mounted Requires Clamp-on Accessory Rail.



**Tabletop Catheter Tray Extension**  
wide, mounts to imaging end of table only. The maximum weight this extension can support is 20 Lbs (9 Kgs).



**Peripheral Extension**  
Carbon fiber extension, mounts to imaging end of table only. 22" (56 cm) wide. Maximum weight for this extension is 25 lbs (11,4 Kgs).



**Clamp-on Accessory Rail**  
For attaching accessories to table top. Rail is 6" (15,2 cm) long x 3/4" (95 mm) thick x 1-1/8" (3 cm) high.



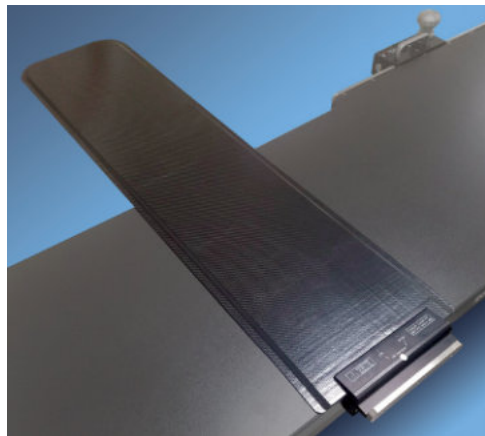
**Arm Board**  
Carbon fiber, shoulder mount. Includes pad and strap.



**Radiation Shield**  
Articulating, rail-mounted. Attaches to table side-rail at base end of table, either side, adjustable. Articulating joint allows shield to conform to table contour. Snap-on upper section above level of tabletop is removable.



**Foot control**  
Foot control for Aspect 100-4T G3 table. Foot control motions are: elevate/lower and Trendelenburg down/up.



**VAB Armboard**  
Carbon fiber, one-piece, extra wide armboard for vascular access procedures.



**Tabletop Catheter Tray Extension**  
24" (61 cm) wide. Mounts to pedestal end of table only. Maximum weight this extension can support is 20 Lbs (9 Kgs).



**Side-rail clamp**  
Rotating, with socket for attachment of accessories with 5/8 inch (1,6 cm) circular post.

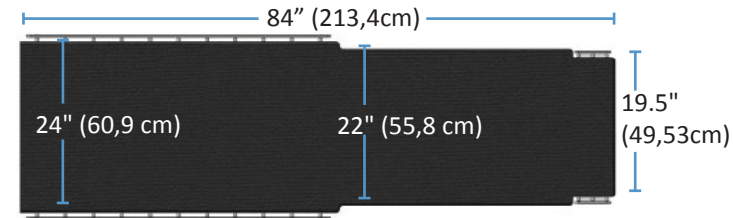


**Anesthesia Screen Holder**  
Flexible "hoop" style can be mounted to standard accessory rails with optional rotating side clamps (required) or directly mounted to the A100-2317 Headrest Extension (Right photo).

# 100-4T G3 Specifications

## Table movements

- Longitudinal tabletop travel: 32" (81,3 cm).
- Transverse tabletop travel: 8" (20,3 cm).
- Trendelenburg Tilt: ±12° with automatic. "stop-at-level" positioning and longitudinal safety lockout when in Trendelenburg.
- Table elevation:
  - WLWKRXW WDEOHWR30" - 43" (76 - 109 cm).
  - With tabletop pad: 32"- 45" (81 - 114 cm).



## Tabletop construction

- Low attenuation carbon fiber with foam core.

## Electrical

- Electrical power requirement: 115 / 230VAC < 10amps
- Full operation from internal battery
- Battery capacity 14Ah with status indicator
- 20' (6 meters) power cord

## Warranty

- Three years parts and labor warranty\*

## Standard accessories

- Tabletop Pad 2" thick, memory foam construction.
- Panning Hand Control, Rail-Mounted
- Pendant hand control
- Patient Restraint Straps (2)

## Capacity / Table Weight

- Patient weight capacity: 600 lbs. (272 kg) without tabletop extensions
- Patient weight capacity: 500 lbs. (226 kg) with tabletop extensions
- Table weight: 605 lbs. (274 kg)

## Certifications

- IEC 60601-1:2005 Ed.3+A1;C1:2014,
- IEC 60601-1-2 4th edition
- IEC 60601-2-46 Ed.2, IEC 62366 Ed 1.1
- AAMI ES60601-1:2005+A1
- CSA C22.2 #60601-1:2014 Ed.3

## The Smart Choice:

- 600 lbs (272 kgs) patient capacity -standard
- 68" (173 cm) imaging area for total bodycoverage
- Up to 5 day battery operation
- No hydraulics - no oil leaks
- No pneumatics - no compressor service
- Effortless float operation
- Lowest base height
- Three year parts and labor warranty\*

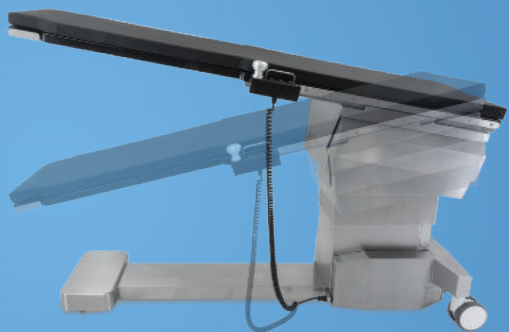
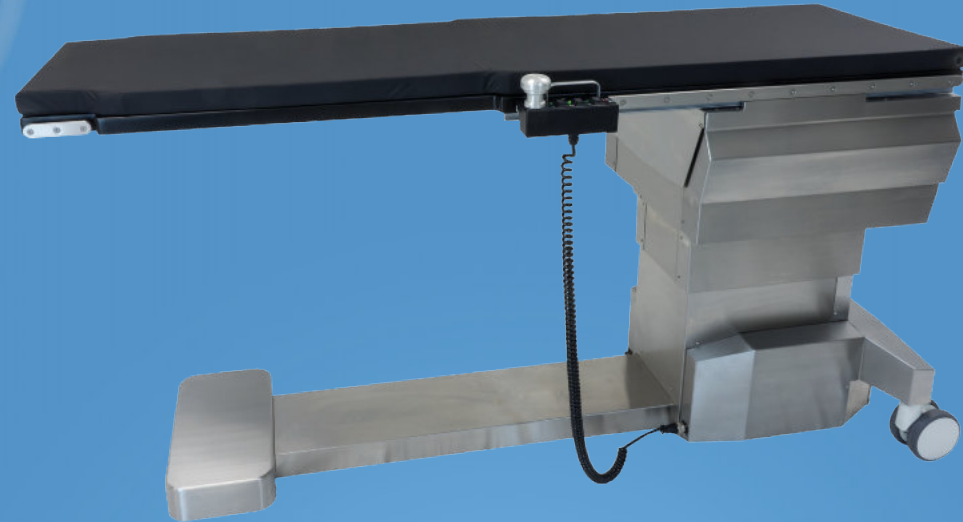


Image Diagnostics, Inc. reserves the right to update product specifications without notification. \*See IDI Warranty Document D000-498 for details

Image Diagnostics, Inc. 310 Authority Drive Fitchburg, MA 01420 USA  
(877) 304-5434 imagediagnostics.com

L100-2913B

# 100-4T G3

Interventional / Endovascular Imaging Table  
With Trendelenburg Tilt



Image Diagnostics, Inc.  
Safety, Simplicity, Quality

# 100-4T G3

## Provides surgical articulation in a four-way manual float table with trendelenburg tilt

The Image Diagnostics 100-4T G3 represents the ideal balance between performance and price in the Aspect™ series table line. In the OR and off ce-based labs the 100-4T G3 is the preferred imaging solution during interventional and vascular procedures.

The 100-4T G3 delivers 32" (81 cm) of longitudinal float in a very compact platform. Table positioning in smaller rooms is enhanced while comprehensive anatomical coverage can easily be accomplished without any C-Arm movement. The standard 84" (213 cm) top provides 68" (173 cm) of imaging area. When equipped with the optional head rest or peripheral extension, the imaging area increases to 80" (203 cm) – Now full body imaging on the tallest of patients is possible.

A high-quality carbon fiber tabletop and 2" (5 cm) thick tabletop pad deliver minimal total x-ray attenuation.

## Complete table control at your finger tips

Panning and motorized functions combined into one easy to use control handle  
*No need to switch between a pendant and panning control!*



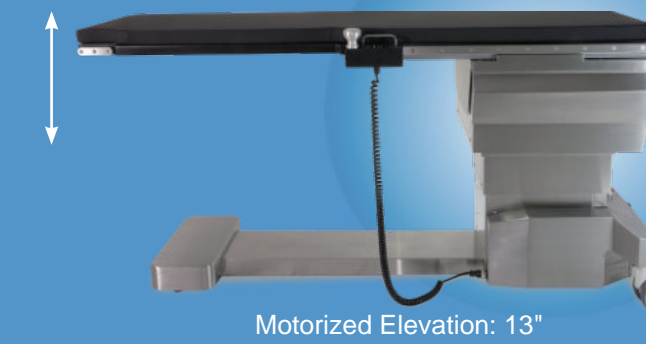
100-4T G3 table shown with IDI's ilex55 video integration system



100-4T table with optional headrest extension

- **Safety and functionality** - Lock out motorized functions without losing panning ability. Accidental release of the panning control is prevented by an intuitive handle release design.
- **Extensions and Imaging** - A mini-rail system on the head end of the table permits the installation of the optional headrest, tray extensions and accessories - in seconds.
- **Reliability and simplicity of design** - IDI is a market leader in advanced vascular imaging tables. Long-term reliability is reflected in our comprehensive three year parts and labor warranty.

## 100-4T G3 Table Motions



Motorized Elevation: 13"



Longitudinal float 32"



Transverse float 8"

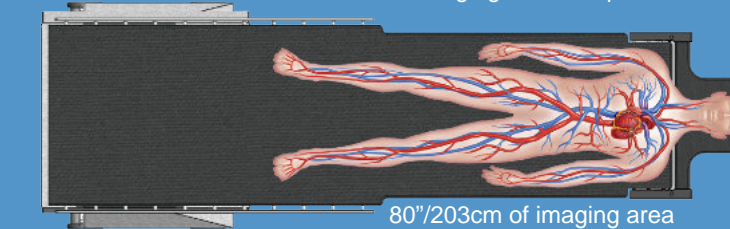


Trendelenburg tilt ±12°

## 100-4T G3 Table Assets

Tabletop shown with optional head extension

← Head-to-toe imaging of a 6' 8" patient →

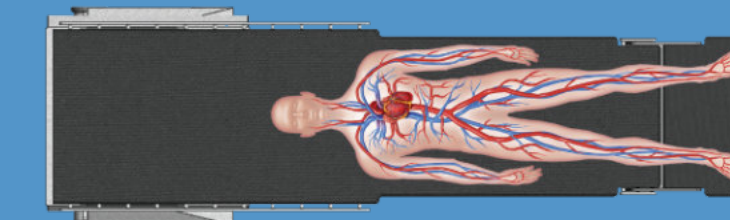


80"/203cm of imaging area

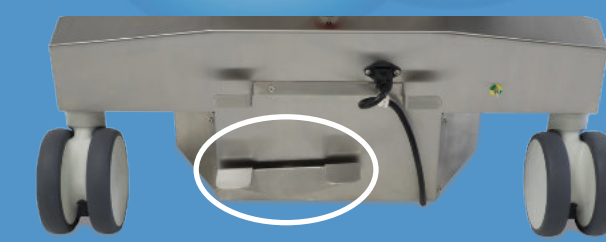


For easy positioning and cable management, table controls connect on either side of the table pedestal

Tabletop shown with optional peripheral extension



Very large radiolucent imaging area. Low AL equivalency carbon fiber top for maximum safety to patient and staff



Simple central locking system for easy transport and positioning