

All you could hope for in a Hospital storage system



Dispensa

Medication Storage Solutions

Cleanstor®

Hygienic Surgical Consumables Storage Solutions

Flowsell™

Flowsell™ storage solutions are engineered to efficiently store all hospital medications and surgical products. Flowsell™ quality equipment has been especially designed for easy handling, improved workflows and hygiene control.

Dispensa Medication Storage Solutions

PullOut Shelving Systems	1-3
Flat Shelf Systems	4-5
Companion Products for Flat Shelves	6-7
Medication Drawer Systems	8-9
Medication Cupboards	10-11

Cleanstor® Surgical Storage Solutions

Wire Mesh Basket Systems	12-14
PullOut Wire Basket Systems	15-17
Large Wire Basket Systems	18
Wire Rack Systems	19-20
Hospital Trolleys	21
Flowsell™ Workstations	22

PULLOUT SHELF SYSTEMS

Flowsell™ PullOut Shelf Systems are so flexible that they can be used on free standing gondolas, walls or even in cupboards. No other company's offer is as versatile to efficiently store and dispense medications.

Use in Hospital Pharmacies and Medication Rooms for:

- Capsules
- Tablets
- Liquids
- Other medications

You can choose from two PullOut Shelves

FLOWSELL™ PULLOUT TRAYSHELF

A highly popular metal shelf opening on quality drawer runners. Fitted with the unique polycarbonate FastFit® Dividers and clear Shelf Fronts for quick assembly and ease of operation.

Key Benefits:

- Push pad opening
- Self locking
- Adjustable dividers
- Easy clean
- Rotates stock
- Drugs fully visible

PullOut TrayShelf/SlipShelf Sizes

Depth	Width
305mm	600 or 915mm
405mm	600 or 915mm
505mm	600 or 915mm
Medications/Shelf	
600mm	8 to 9
915mm	12 to 13

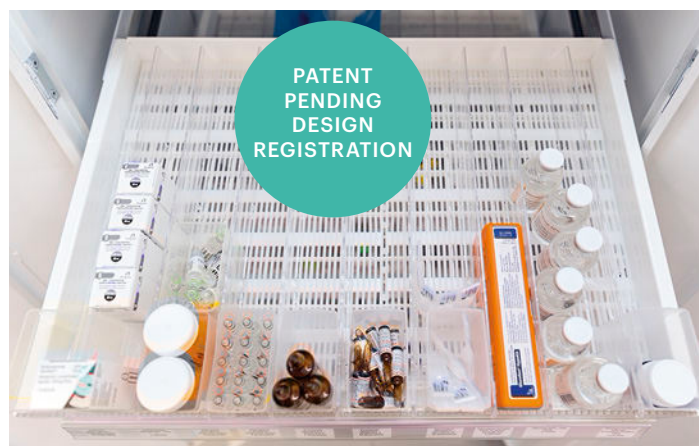


FLOWSELL™ PULLOUT SLIP SHELF

A similar PullOut Shelf but with a polyethylene slip mat base that allows dust to pass through the shelf. The SlipShelf® uses the same quality drawer runners, Shelf Fronts and FastFit® Dividers.

Key Benefits:

- Push pad opening
- Self locking
- Dust free
- Improved hygiene
- Superior gravity feed



DISPENSA PULLOUT WALL UNIT

A Single Sided Gondola with up to eight or nine Flowsell™ PullOut TrayShelves or SlipShelves.

	Post Height	Depth (Overall)		
		305	405	505
	2260mm	407mm	507mm	607mm
	Width (Overall)			
	1 Bay	2 Bay	3 Bay	4 Bay
System 600	635mm	1236mm	1840mm	2440mm
Medications *	75	150	225	300
System 915	950mm	1866mm	2784mm	3700mm
Medications *	110	220	330	440

*Standard eight PullOut TrayShelves or SlipShelves



DISPENSA PULLOUT DOUBLE SIDED

Flowsell™ PullOut TrayShelves or SlipShelves on a Double Sided Gondola.

	Post Height	Depth (Overall)		
		305	405	505
	2260mm	740mm	940mm	1140mm
	Width			
	1 Bay	2 Bay	3 Bay	4 Bay
System 600	635mm	1236mm	1840mm	2440mm
Medications *	150	300	450	600
System 915	950mm	1866mm	2784mm	3700mm
Medications *	220	440	660	880

*Standard sixteen PullOut TrayShelves or SlipShelves



DISPENSA™ PULLOUT CUPBOARD

The Flowsell™ PullOut, TrayShelves or SlipShelves can be fitted on Wall Stripping to the back of a new or existing cupboard.

Cupboard Height	Cupboard Depth (Internal)		
	305	405	505
Optional	355mm	455mm	555mm
	Cabinet Width (Internal)		
	1 Bay		
System 600	615mm		
Medications *	75		
System 915	930mm		
Medications *	110		

*Standard eight PullOut TrayShelves or SlipShelves



DISPENSA PULLOUT WALL STRIPPING

PullOut, TrayShelves or SlipShelves can be installed on walls in the Hospital Pharmacy or Medication Rooms on Single and Double Wall Stripping.

	Height	Depth from the wall		
		305	405	505
	Optional	350mm	450mm	550mm
	Width			
	1 Bay	2 Bay	3 Bay	4 Bay
System 600	612mm	1220mm	1826mm	2435mm
Medications *	75	150	225	300
System 915	927mm	1850mm	2770mm	3695mm
Medications *	110	220	330	440



FLOWSELL™ TRAYSHELF OR SLIPSELF SHELVING

The TrayShelves and SlipShelves use the same Shelf Front and FastFit® Dividers as the PullOut Shelves, however, the shelves remain static on fixtures or multi-angle cantilever brackets.

	Wall Unit				Double Sided			
	Post Height	Depth			Post Height	Depth		
		305	405	505		305	405	505
	2260mm	388mm	488mm	588mm	2260mm	706mm	906mm	1106mm
	Width				Width			
	1 Bay	2 Bay	3 Bay	4 Bay	1 Bay	2 Bay	3 Bay	4 Bay
System 600	635mm	1236mm	1840mm	2440mm	635mm	1236mm	1840mm	2440mm
Medications *	80	160	240	320	160	320	480	640
System 915	950mm	1866mm	2784mm	3700mm	950mm	1866mm	2784mm	3700mm
Medications **	115	230	340	460	230	460	680	920

*Standard eight Cantilever TrayShelf or SlipShelves.

**Standard sixteen Cantilever TrayShelf or SlipShelves.



DISPENSA REAR LOAD CABINET

A melamine cabinet of TrayShelves, fixed by Support Pins to the side of the cabinet. Shelves slope forward so that clinical staff can dispense from the front as non-clinical staff stock the system from the rear.

Key Benefits:

- Lower cost
- Superior rotation
- Excellent workflow
- Refit or retrofit

	Cabinet Height	Depth of cabinet		
		405	505	
	2300mm	520mm	520mm	
	Width			
	1 Bay	2 Bay	3 Bay	4 Bay
System 600	730mm	1395mm	2060mm	2790mm
Medications *	90	180	270	360
System 915	1045mm	2025mm	3005mm	4050mm
Medications *	130	260	380	515

*Standard nine Support TrayShelves



BROKEN PACK TRAY

A small tub to store blister trays and tablet sachets from opened medication packs. Positioned at the front of the row to organise loose components from broken medication packs.

Height	Width	Depth
68mm	78mm	47mm



PARTITION TRAY WITH PARTITION TRAY DIVIDERS

Increases the capacity of any shelf by increasing the number of items stored in a row. Ideal for storing small tubes or vials of creams and ointments or for multiple strengths of a medication.

System	Height	Width	Depth
300	90mm	117mm	300mm
400	90mm	117mm	400mm



GRAVITY ROLLER

The Gravity Roller is an inexpensive way to keep gravity fed blister packs upright by adding weight to the rear of a row of medication packs.

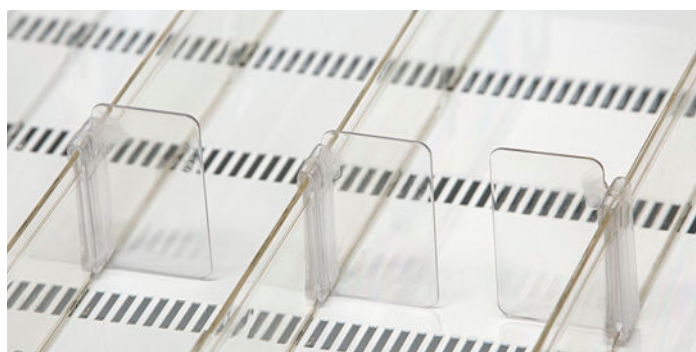
Height	Width
33mm	40mm



ROW DIVIDER

Clips onto a FastFit® Divider to divide the row into segments. Ideal to store medications with multiple strengths in a row. Also, to simply store more than one medication in a row.

Height	Width
68mm	40mm



FLAT DATA STRIP

Ticket stripping with an adhesive back for a 26mm barcode ticket for a flat shelf.

Height	Width
30mm	600mm or 915mm



FRONT ANGLE DATA STRIP

Ticket stripping with an adhesive back for a 26mm barcode ticket for an angled shelf.

Height	Width	Angle
31mm	600mm or 915mm	20°



MOUNTING STRIP

An elongated profile attached by double sided tape to the front and/or rear of a shelf to clip Shelf Dividers

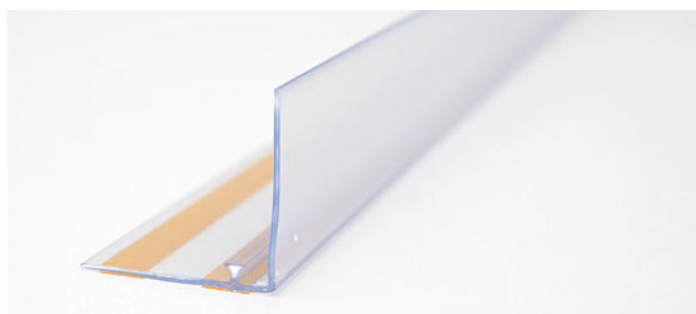
Height	Length
5mm	914mm



MOUNTING RISER

An elongated profile with a front barrier to stop product falling off a sloping shelf. Attached at the base by double sided tape. Shelf Dividers can also be fitted to Mounting Risers.

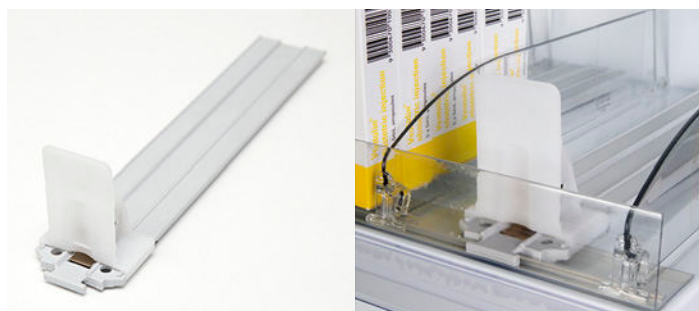
Height	Length
40mm	914mm
75mm	914mm



SPRING PUSHER

The Spring Pusher uses a clock spring to self-feed narrow or unstable packs on a shelf.

Height	Length
60mm	300mm – 600mm
130mm	300mm – 600mm



SHELF DIVIDER

Flowsell™ retrofit Shelf Dividers clip to either a Mounting Strip or Mounting Riser at the front of the shelf. Every break off point has a hook to clip at the rear to a second Mounting Strip.

Height	Length
60mm	150mm – 400mm*
120mm	150mm – 400mm*
60mm	400mm – 600mm*
120mm	400mm – 600mm*



BASE PULLOUT GONDOLA DRAWER

A pullout metal drawer that slides on drawer runners at the bottom of a Single Sided Wall Unit or Double Sided Gondola.

System	Height	Width	Depth
600	170mm	560mm	305mm or 405mm
915	170mm	872mm	305mm or 405mm



PULLOUT GONDOLA DRAWER

A similar pullout metal drawer, fitted to a gondola at any height above the base, between any Flowsell™ shelf.

System	Height	Width	Depth
600	200mm	590mm	305mm, 405mm or 505mm
915	200mm	905mm	305mm, 405mm or 505mm



FLOWSELL™ DUALDRAWER

A powder coated metal drawer with two elongated compartments. Divided back to front by DualDrawer Dividers that are easy to adjust. The melamine Drawer Fronts can be colour matched to any Laminex™ or Pantone™ colour. Each Drawer Front has a window to identify medications in the drawer. DualDrawers open on quality German engineered roller drawer runners.

Use in Hospital Pharmacies and Medication Rooms for:

- Capsules
- Tablets
- Ointments
- Pessaries
- Small vials

Key Benefits:

- Highest capacity
- Compact space
- Improved workflows

Medications/Drawer	
600mm long	15 to 16
915mm long	20 to 22

Height	Width	Length
125mm	353mm*	600mm and 915mm
250mm	353mm*	600mm and 915mm



DISPENSA DRAWER CABINET

A freestanding melamine cabinet of DualDrawers supported by a robust powder coated steel frame.

Available in three combinations:

- DC1** One 250mm base DualDrawer, no Step, nine 125mm DualDrawers with two DualDrawers 250mm on top
- DC2** One base 250mm DualDrawer, Step, plus eleven 125mm DualDrawers with one 250mm on top
- DC3** One 250mm DualDrawer, Step, plus thirteen 125mm DualDrawers above

	Cabinet Height	Drawer Length*	Cabinet Depth	
	2175mm	915mm	970mm	
	Cabinet Width			
	1 Bay	2 Bay	3 Bay	4 Bay
	500mm	942mm	1380mm	1822mm
	Approximate Medications			
DC1	220	440	660	880
DC2	285	570	855	1140
DC3	300	600	900	1200

*DualDrawer 600 on request

DISPENSA UNDERBENCH
DRAWER CABINET

A compact cabinet of DualDrawers for under a dispensing bench.

There are two cabinet combinations:

- UC1 Six 125mm DualDrawers
- UC2 One base 250mm and four 125mm DualDrawers

Dispensa UnderBench Cabinets can be:

- Single One column of DualDrawers
- Double Two columns of DualDrawers

Cabinet Height	Drawer Length*	Cabinet Depth
865mm	600mm	685mm
	Cabinet Width	
	Single	Double
	463mm	868mm
	Medications Per Cabinet	
	UC1	100
	UC2	80

*DualDrawer 915 on request

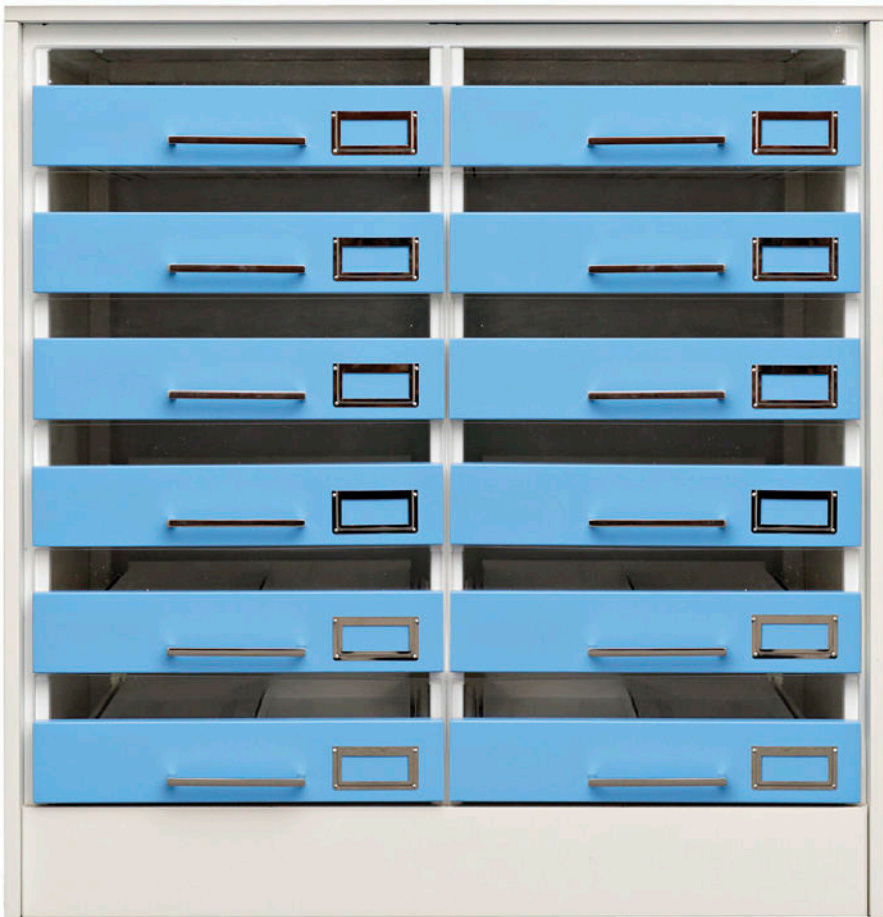


UC2



Single

UC1



Double

READY TO GO MEDICATION CUPBOARDS

Flowsell™ supply a versatile range of Medication Cupboards. Each cupboard is equipped to take either the Flowsell™ PullOut Shelf, Flat Shelf, fixed Wire Mesh Baskets or PullOut Wire Baskets

All System 600 Medication Cupboards can have either Slam Locks and Punch Panels or 3-Point Key Locks and double doors. System 915 Medication Cupboards have only 3-Point Key Locks for security. All Medication Cupboards are available with clear doors on request.

For any medication room,
ward or hospital location:

- Restricted medications
- Resuscitation drugs
- After hours medications
- Records

Key Benefits

- Security
- Retrofit
- Compact storage
- Relocatable
- Multiple Use

BENCH MEDICATION CUPBOARD – 978-600

A powder coated steel cupboard for under a bench or on the wall above a bench when mounted on a wall attachment. Uniquely designed to fit all Flowsell™ medication shelving and wire baskets.

Bench Medication Cupboard System 600		Medication Options Fitting the Cupboard			
		PullOut TrayShelf		Cantilever Flat Shelf	
Height	978mm	4		4	
Width	672mm	595/305		599/305	
Depth	445mm				
Surgical Options Fitting the Cupboard					
Wire Mesh Baskets on Punched Panels				PullOut Wire Baskets	
MB1	MB2	MB3	MB4	WB1	WB2
32	32	5	4	5	3



MEDICATION CUPBOARD – 2M-600

A freestanding Medication Cupboard on adjustable feet. Uniquely designed to take any Flowsell™ hospital product.

Medication Cupboard System 600		Medication Options Fitting the Cupboard			
		PullOut TrayShelf		Cantilever Flat Shelf	
Height	2030mm	8		8 or 9	
Width	672mm	595/305 or 595/405		599/305 or 599/405	
Depth	545mm				
Surgical Options Fitting the Cupboard					
Wire Mesh Baskets on Punched Panels				PullOut Wire Baskets	
MB1	MB2	MB3	MB4	WB1	WB2
64	64	10	8	10	6



BENCH MEDICATION CUPBOARD – 978-915

A wider steel cupboard for under a bench or on the wall above a bench on a wall mounting attachment. Fitting 915mm wide medications shelving and all wire basket products.

Bench Medication Cupboard System 915		Medication Options Fitting the Cupboard			
		PullOut TrayShelf		Cantilever Flat Shelf	
Height	978mm	4		4	
Width	986mm	910/305		914/305	
Depth	445mm				
Surgical Options Fitting the Cupboard					
Wire Mesh Baskets on Punched Panels				PullOut Wire Baskets	
MB1	MB2	MB3	MB4	WB1	WB2
56	56	10	8	10	6



MEDICATION CUPBOARD – 2M-915

A larger freestanding Medication Cupboard with double doors. Capable of holding up to 120 medications. Ideal for storing medications or surgical supplies that need to be kept under lock and key.

Medication Cupboard System 915		Medication Options Fitting the Cupboard			
		PullOut TrayShelf		Cantilever Flat Shelf	
Height	2030mm	8		8	
Width	986mm	910/305 or 910/405		914/305 or 914/405	
Depth	545mm				
Surgical Options Fitting the Cupboard					
Wire Mesh Baskets on Punched Panels				PullOut Wire Baskets	
MB1	MB2	MB3	MB4	WB1	WB2
112	112	20	16	20	12



WIRE MESH BASKETS

Flowsell™ has designed the Cleanstor® range of wire baskets that includes wire basket cabinets and racks for improved infection control and hygiene.

All Wire Mesh Baskets have small spaces between wires so small packs and vials do not fall through the basket:

MB1 Wire Mesh Basket 150/105

MB2 Wire Mesh Basket 215/105

MB3 Wire Mesh Basket 270/415

MB4 Wire Mesh Basket 350/415

Baskets MB3 and MB4 have Wire Dividers to segment the baskets:

MD3 Basket Divider 170/270

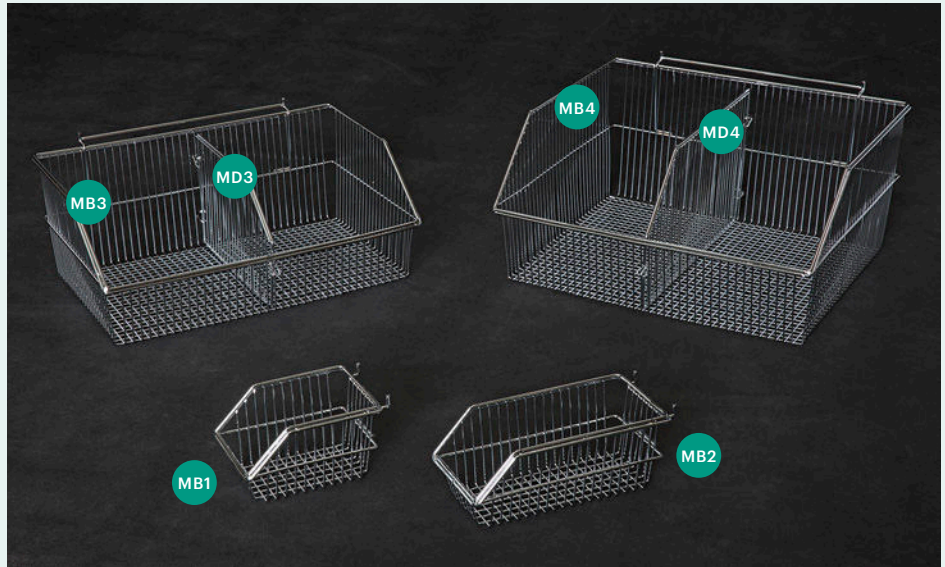
MD4 Basket Divider 200/350

Use in Medication and Utility Rooms for:

- Cannulas
- Bungs
- Needles
- Syringes
- Swabs
- Red Caps

Key Benefits:

- Superior hygiene
- Easy to install
- Quick to adjust



	Cleanstor® Wire Mesh Baskets			
	MB1	MB2	MB3	MB4
Height	84mm	84mm	160mm	200mm
Width	105mm	105mm	415mm	415mm
Depth	150mm	215mm	263mm	354mm

	Corresponding Basket Divider	
	MD3	MD4
Height	154mm	190mm
Length	239mm	330mm

CLEANSTOR® MESH BASKETS ON BASKET STRIPPING

Typically mesh baskets have been fitted to walls on louvre or bin panels permanently fixed to the walls. They collect dust and do not allow walls to be cleaned. Cleanstor® Basket Stripping is a white powder coated strip attached to the wall into which baskets are clipped. This allows baskets and the wall to be easily and regularly cleaned.



Basket Stripping	1200	1800
Length	1200mm	1800mm
Width	47mm	47mm
Depth	16mm	16mm



CLEANSTOR® MESH BASKETS ON LOUVRE PANELS

As many hospitals already have louvre panels on the walls of Medications Rooms, Cleanstor® Wire Mesh Baskets also fit onto existing or new louvre panels.

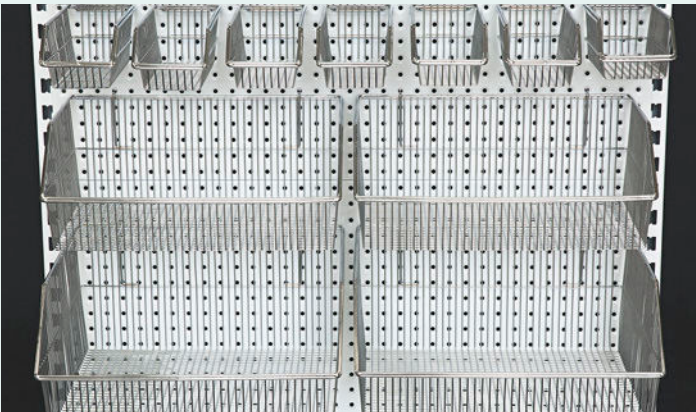
Louvre Panel	
Height	Width
914mm	457mm

CLEANSTOR® MESH BASKETS ON GONDOLAS

All Wire Mesh Baskets can also be fitted to Flowsell™ Single or Double Sided Gondolas that have Punched Panels. This is a novel way to store medications and surgical consumables together on the one fixture or gondola.

GONDOLA 600			
Baskets Per Punched Panel 600mm x 900mm			
MB1	MB2	MB3	MB4
32	32	5	4

GONDOLA 915			
Baskets Per Punched Panel 915mm x 900mm			
MB1	MB2	MB3	MB4
56	56	10	8



CLEANSTOR® WIRE BASKET SOLUTIONS FOR FLUIDS AND CONSUMABLES

Flowcell™ has another range of Cleanstor® Wire Baskets uniquely designed to slide out on roller drawer runners. Cleanstor® PullOut Wire Baskets are so flexible they can be fitted in cupboards, PullOut Basket Gondolas, Underbench PullOut Basket Cabinets or freestanding Basket Cabinets.

WB1 Wire Basket 140/560

WB2 Wire Basket 280/560

Wire Basket **WB1** can be divided two ways.
WB2 is segmented only back to front

WD1 2-Way Basket Divider 2W 140/400

WD1 4-Way Basket Divider 4W 140/400

WD2 2-Way Basket Divider 280/400

Drawer runners have two load ratings

Light Duty 40kgs used for:

- Cannulas
- Catheters
- Bandages
- Connectors
- Airways
- Stationery etc.

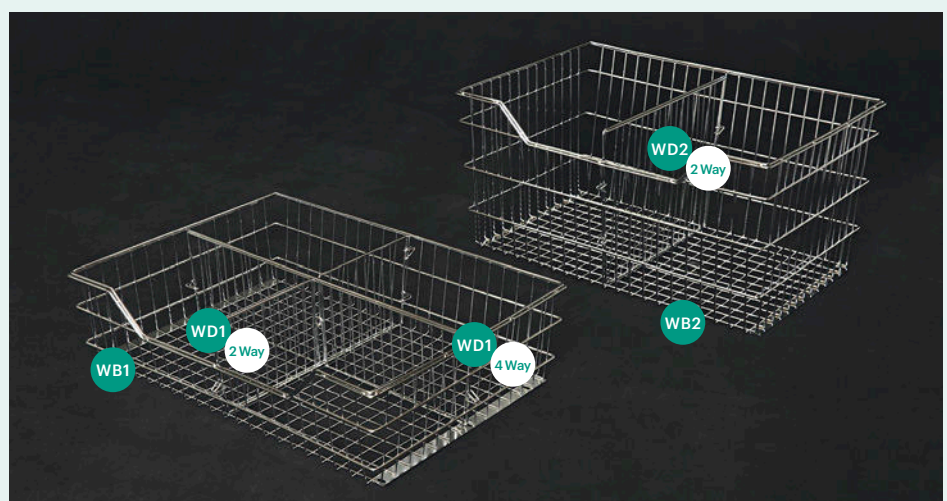
Heavy Duty 100kgs used for:

- IV Fluid Therapy

Key Benefits:

- Easy stocking
- Fast access
- Ergonomic handling
- Strong and robust
- Hygienic

	Cleanstor® Wire Basket	
	WB1	WB2
Height	140mm	280mm
Width	560mm	560mm
Depth	400mm	400mm
	Corresponding Basket Divider	
	WD1	WD2
	2-Way	2-Way
Height	139mm	269mm
Length	381mm	378mm
	4-Way	
Height	139mm	
Length	540mm	



CLEANSTOR® PULLOUT WIRE BASKETS FOR CUPBOARDS

Cleanstor® Wire Baskets on pullout drawer runners can be fitted to new or existing cupboards. Fluids or surgical items can be destocked from cardboard cartons and stored in Cleanstor® Wire Baskets in a cupboard.

Cupboard Height	Minimum Internal Cupboard Depth	Standard Internal Cabinet Width
Optional	420mm	575mm



CLEANSTOR® PULLOUT BASKET GONDOLA

Flowsell™ has developed a unique frame to pullout Cleanstor® Wire Baskets from a 600mm wide Wall Unit or Double Sided Gondola. Any combination of the Wire Baskets WB1 or WB2 can be fitted to the gondola on either heavy duty or light duty drawer runners. Flat or Pullout Shelves can be fitted above the baskets for medications.

	Gondola Dimensions	Cleanstor® Wire Basket Combinations	
Height	2260mm	Model	
Width	635mm	BG1	8WB1
Depth	485mm	BG2	10WB1
		BG3	4WB2
		BG4	5WB2



CLEANSTOR® UNDERBENCH
PULLOUT BASKET CABINET

Three standard UnderBench Cabinets fit under standing benches of 1 metre and 900mm and a sitting bench of 700mm. However, UnderBench Cabinets can be custom made to suit any bench. All UnderBench PullOut Basket Cabinets have adjustable feet and all baskets can have light duty or heavy duty drawer runners.

Wire Basket Combination Packages

We have a handy range of packages available to choose from.

UB8 – Bench 1M high

Package A 5 x WB1 Wire Baskets

Package B 3 x WB1 Wire Baskets and 1 WB2 Wire Basket

Package C 1 x WB1 Wire Basket and 2 WB2 Wire Basket

UB6 – Bench 900mm high

Package D 4 x WB1 Wire Baskets

Package E 2 x WB1 Wire Baskets and 1 WB2 Wire Basket

UB5 – Sitting bench 700mm high

Package F 3 x WB1 Wire Baskets

Package G 1 x WB1 Wire Basket and 1 WB2 Wire Basket

Other Options

- Melamine Panel Kit
- Roller Shutter/Lock
- Wall Attachment

UnderBench PullOut Basket Cabinet			
Width	615mm	Depth	420mm
Model	UB8	UB6	UB5
Frame Height	800mm	655mm	505mm
Including Feet	850mm	705mm	555mm



CLEANSTOR® PULLOUT BASKET CABINET

This is a free standing cabinet of PullOut Wire Baskets. Available in five combinations of WB1 and WB2 PullOut Wire Baskets. Cabinet modules can be single or in joined bays. The top basket is angled and can be lifted off. Wire Baskets can have either light duty or heavy duty drawer runners.

PullOut Basket Cabinet Combinations		Wire Basket Combinations Per Bay		Other Options
Height	1885mm	WB1	WB2	Melamine Panel Kit
Depth	503mm			
	Width	10	0	Roller Shutter/Lock
1 Bay	615mm	8	1	Wall Attachment
2 Bays	1210mm	6	2	
3 Bays	1805mm	4	3	
4 Bays	2400mm	2	4	



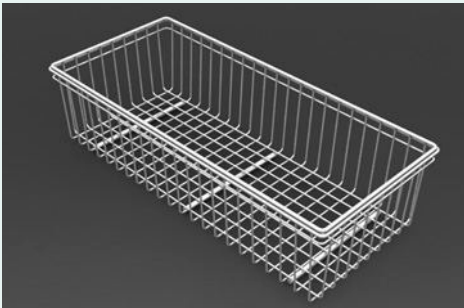
CLEANSTOR® FRIDGE WIRE BASKET

An elongated Wire Basket with a clear Basket Divider that is easy to remove from the refrigerator and take to the dispensing bench.

Key Benefits:

- Good air circulation
- Compact storage
- Highly accessible

	Fridge Wire Basket	Partition Tray Divider
	RB1	RD1
Height	98mm	85mm
Width	180mm	180mm
Depth	400mm	



CLEANSTOR® LARGE WIRE BASKETS

A bigger Wire Basket is often required to store large surgical products or equipment. Flowsell™ has two large baskets with rear brackets that clip into slots in the upright posts of a Single or Double Sided Gondola. Baskets can be easily adjusted without tools.

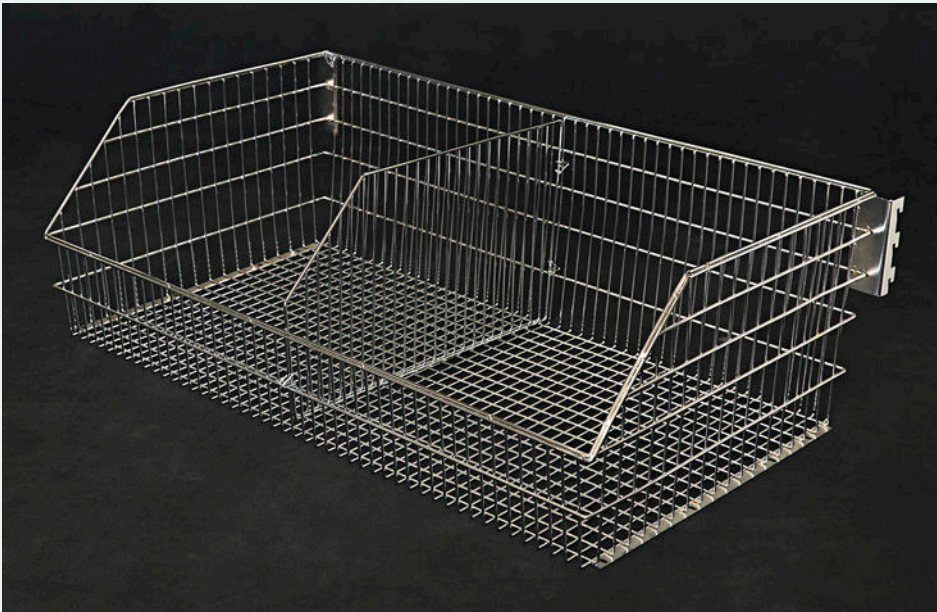
Use for Utility Rooms and Bulk Stores for:

- Surgical drapes
- Catheters
- Bandages
- Excess stock

Key Benefits:

- High capacity
- Flexible positioning
- Easy to adjust

	Cleanstor® Large Wire Baskets	
	LB1	LB2
Height	280mm	280mm
Width	874mm	874mm
Depth	395mm	492mm
	Corresponding Basket Divider	
	LD1	LD2
Height	269mm	269mm
Length	364mm	466mm



CLEANSTOR® LARGE WIRE BASKETS ON GONDOLAS

When large baskets are fitted to Wall Units or Double Sided Gondolas they are ideal for bulk storage. Gondolas can be shifted as storage requirements change.

Gondola System	Post Height	Depth		Width
915/405	2260mm	507mm	1Bay	950mm
915/505	2260mm	607mm	2 Bays	1866mm
Baskets per Gondola	LB1	3 to 5	3 Bays	2784mm
	LB2	3 to 5	4 Bays	3700mm



CLEANSTOR® WIRE RACK SYSTEM

Static shelving has conventionally been chrome wire shelves fitted to upright posts by plastic sleeves. These shelves are difficult to adjust and can only be re-positioned with a rubber mallet. Flowsell™ has developed a rack shelf system in which the shelf, called the RackShelf, can be adjusted by any nurse in an instant.

Use for Operating Theatres, Utility Rooms and Bulk Stores for:

- Theatre supplies
- Medical equipment
- Anaesthetic supplies
- Prosthesis boxes
- Fluids in cartons

Key Benefits:

- Superior adjustment
- Strong and robust
- Quality chrome plated
- Versatile attachments



CLEANSTOR® WIRE RACK

This rack system is strong and robust. Each RackShelf can be quickly and easily adjusted in height without tools. Bays can be joined together or placed back to back.

The Cleanstor® Wire Rack is a space efficient system that has:

3 Widths 600mm, 900mm and 1500mm

3 Depths 405mm, 505mm and 605mm

The flat RackShelf can be customised to suit the storage needs of any product using the following accessory items:

3 Clip-on Front Rails 40mm, 100mm or 200mm high

3 Clip-on Rear Rails 40mm, 100mm or 200mm high

4 Clip-on Shelf Dividers 60mm, 100mm, 120mm or 200mm high

Cleanstor® Rack		Cleanstor® Front or Rear Rails		Cleanstor® Shelf Dividers	
Post Height	2130mm				
Width	Depth	Height	Width	Height	Length
600mm	405mm	40mm*	600mm	60mm*	405mm
600mm	505mm	40mm*	900mm	60mm*	505mm
600mm	605mm	40mm*	1500mm	60mm*	605mm
900mm	405mm	100mm	600mm	100mm	405mm
900mm	505mm	100mm	900mm	100mm	505mm
900mm	605mm	100mm	1500mm	100mm	605mm
1500mm	405mm	200mm	600mm	120mm*	405mm
1500mm	505mm	200mm	900mm	120mm*	505mm
1500mm	605mm	200mm	1500mm	120mm*	605mm
*Polycarbonate				200mm	405mm
				200mm	505mm
				200mm	605mm
				200mm	605mm

We make it easy for you to choose the system that will work for you. With Flowsell™, Dispensa and Cleanstor® systems we offer quality storage equipment to give you improved workflows and hygiene control.

All Dispensa and Cleanstor® products are manufactured to ISO standard 9001 and are backed by a five year warranty. We provide a full service which includes consultation, hospital plans, supply and national installation. Flowsell™ is an Australian owned supplier of quality equipment for the storage and efficient dispensing of medications and surgical consumables.

Flowsell™

Factory 1/13 Network Drive,
Carrum Downs, Victoria 3201

Ph: (03) 9708 2276

Fax: (03) 9708 2279

E: sales@flowsell.com.au

W: flowsellpharmacysolutions.com.au

