

# EC2060

## Blanket Warming Cabinet

20.6 ft<sup>3</sup> (0.58m<sup>3</sup>)  
interior capacity  
Windowed doors



37-93°C (98-200°F) range  
Deluxe electronic control  
24-hour timer (single  
programmable "off" period)  
Epoxy-coated blanket  
support assembly

 **ENTHERMICS**  
**Medical Systems**

An ISO 13485:2003 certified company

[www.entermics.com](http://www.entermics.com)

*Experience the Entermics difference:  
Quality beyond comfort.*

# EC2060 Blanket Warming Cabinet

## Specifications:

This warming cabinet is designed to elevate blanket temperatures to a level which will increase patient comfort.

The warming cabinet is constructed with stainless steel exterior casing and door with handle and hinges designed to withstand heavy usage. A door with window allows observation of inventory with the door closed. The cabinet is warmed using low-heat-density electrothermal cable array. The electrothermal cable is positioned in the floor and two sides of the warming cabinet, providing even heating of the interior chamber.

The cabinet is equipped with one (1) epoxy-coated blanket support assembly and one (1) center shelf per door opening. The cabinet is furnished with one (1) set of 5" (127mm) heavy duty casters, two with locking brake.

## Control:

The temperature of each chamber is regulated by an electronic control consisting of a 4 digit L.E.D. display, ON/OFF button, INCREASE and DECREASE buttons, integrated control lock-out feature, timer and a series of prompt sequence indicators. The design and operational characteristics of the cabinet eliminate the need for a heat circulating fan.

The electronic control can easily be set to operate in Fahrenheit or Celsius. After a power failure, the cabinet will remember its programming and begin to operate as before. The ON/OFF indicator will blink to indicate a failure occurred; pressing the ON/OFF key once will eliminate this blinking. A thermal shut-off system, separate from the electronic control, is included as an additional safety feature.

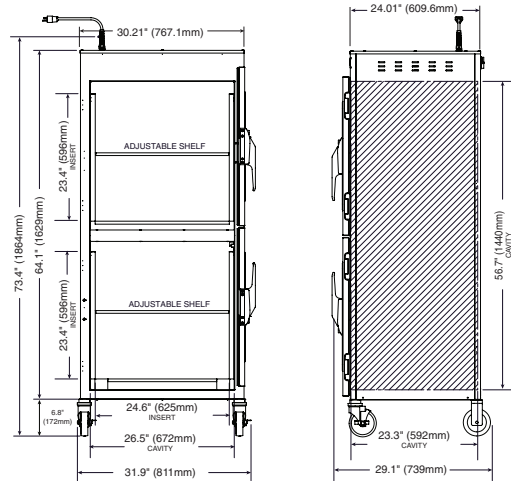
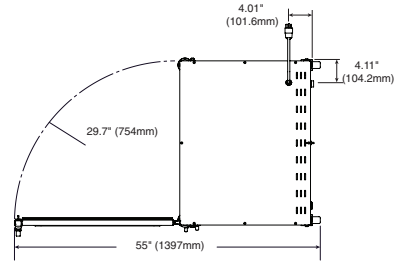
The control will display temperature in whole degrees.

The electronic control has an adjustable temperature range of 37° to 93°C (98° to 200°F).






The TIMER feature allows the user to program the control to automatically turn on and turn off once during a 24 hour period at selected times. This enables the chamber to be shut off automatically at night to save energy, but to turn on again in the early morning to ensure warm blankets are available.

## Special Information:

- Right hinging is standard.  
Left hinging is available as a special order.
- Windowed door is standard.  
Solid door is available as a special order.
- Pass-through design is available.



| Capacity and Weights |                                        |
|----------------------|----------------------------------------|
| Interior Capacity    | 20.6 cubic feet (c. 58m <sup>3</sup> ) |
| Net Weight           | 412 lb (187 kg)                        |
| Ship Weight          | 458 lb (208 kg)                        |

| Electrical                                                                                                                        |                                                                                                                                                                                                                                                                                                                              |
|-----------------------------------------------------------------------------------------------------------------------------------|------------------------------------------------------------------------------------------------------------------------------------------------------------------------------------------------------------------------------------------------------------------------------------------------------------------------------|
| 120 V.A.C. — 50/60 Hz, 1 ph<br>1.7 kW, 14.2 Amps<br>Safety Class I Equipment<br>No Applied Parts<br>Mode of Operation: Continuous |  NEMA 5-15P<br>15A - 125V Plug<br>Hospital Grade<br>                                                                                               |
| 230 V.A.C. — 50/60 Hz, 1 ph<br>1.45 kW, 6.3 Amps<br>Type B Equipment                                                              |  BS 1363 Plug*<br>(UK only)<br> CEE 7/7*<br>220-230V Plug<br> |

\*Other international plugs are available, contact factory for more information.

| Options and Accessories |          |
|-------------------------|----------|
| Built-in Trim Kit       | 5013968  |
| Leg Kit, 6" (152mm)     | 5017084  |
| Lock for Door Handle    | LK-22567 |



An ISO 13485:2003 certified company

PO Box 443 · Menomonee Falls WI 53052-0443  
W164 N9221 Water St · Menomonee Falls WI 53051  
Phone 262-251-8356 · 800-862-9276 · Fax 262-251-7067  
generalinfo@enthermics.com  
www.enthermics.com · www.ivnow.com