

EC1730^{bl}

Combination Blanket/Fluid Warming Cabinet



17.3 ft³ (0.49m³) interior capacity

Windowed doors

Interior illumination

**Blanket Chamber Capacity:
11.875 ft³ (0.34m³)**

**Fluid Chamber Capacity:
30 1-liter bottles or
24 1-liter bags**

Fluid chamber

WarmRight[®] provides the right temperature for the right product: irrigation (IRR) or injection (INJ) fluids

Temperature range

37°-66°C (98°-150°F)
adjustable irrigation mode

37°-40°C (98°-104°F)
adjustable injection mode

Deluxe electronic control

Blanket chamber

37-93°C (98-200°F) range

Deluxe electronic control

24-hour timer (single programmable "off" period)

Epoxy-coated blanket support assembly

 **ENTHERMICS**
Medical Systems

An ISO 13485:2003 certified company

the warming people[®]
FLUID & BLANKET WARMERS

www.enthermics.com

*Experience the Entermics difference:
Quality beyond comfort.*

EC1730^{bl} Combination Blanket/Fluid Warming Cabinet

Specifications:

The dual-chambered warming cabinet is constructed with stainless steel exterior casing and door with handle and hinges designed to withstand heavy usage. A door with window allows observation of inventory with the door closed. The cabinet is warmed using low-heat-density electrothermal cable array. The electrothermal cable is positioned in the floor and two sides of the warming cabinet, providing even heating of the interior chamber.

The blanket warming chamber contains an epoxy-coated blanket support assembly and two (2) shelves. The fluid warming chamber is equipped with one (1) white, epoxy-coated metal basket to accommodate most commonly used surgical fluids packaged in bags or bottles, mounted on basket rail supports. The basket has a capacity of **30 1-liter bottles or 24 1-liter bags**. The cabinet is furnished with one (1) set of 5" (127mm) heavy-duty casters, two with locking brake.

Control:

Each chamber's temperature is regulated by a separate electronic control consisting of a 4 digit L.E.D. display, ON/OFF button, INCREASE and DECREASE buttons, integrated lock-out control feature and a series of prompt sequence indicators.

Each control can easily be set to operate in Fahrenheit or Celsius. After a power failure, the cabinet will remember its programming and begin to operate as before. The ON/OFF indicator will blink to indicate a failure occurred; pressing the ON/OFF button once will eliminate this blinking. A thermal shut-off system, separate from the electronic controls, is included as an additional safety feature.

The control will display temperature in whole degrees.

Blanket warming chamber:

The design and operational characteristics of the chamber eliminate the need for a heat circulating fan.

The electronic control has an adjustable temperature range of 37° to 93°C (98° to 200°F).

The TIMER feature allows the user to program the control to automatically turn on and turn off once during a 24 hour period at selected times. This enables the chamber to be shut off automatically at night to save energy, but to turn on again in the early morning to ensure warm blankets are available.

Fluid warming chamber:

The warming cabinet can be programmed to warm either irrigation fluids (IRR) or injection fluids (INJ), with separate temperature ranges provided depending on the choice selected.

- IRR temperature range: 37° to 66°C (98° to 150°F),
- INJ temperature range: 37° to 40°C (98° to 104°F).

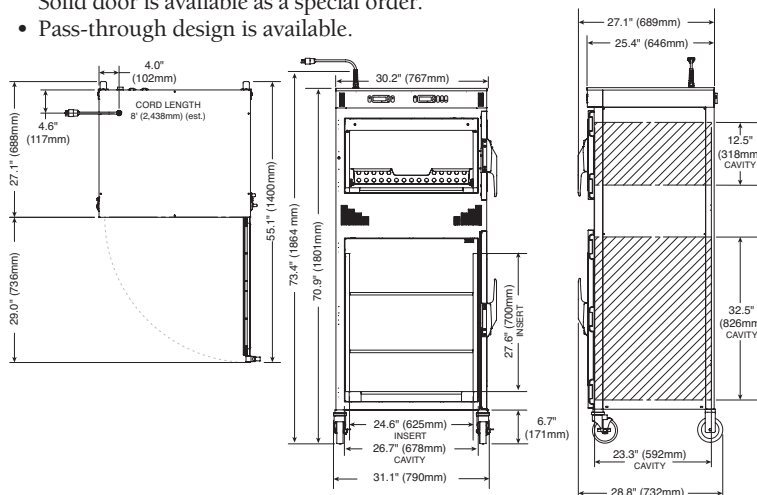
A fan located inside the chamber mixes the air to prevent temperature stratification and to ensure an accurate chamber temperature for each mode.

- Within +0/-1.67°C (+0/-3°F) for set points of 43° to 66°C (110° to 150°F)
- Within +0/-1.12°C (+0/-2°F) for set points of 37° to 40°C (98° to 104°F).

An alarm will sound if temperatures exceed 6°C (10°F) over the set-point temperature, and an OVERTEMP indicator will blink indicating an over-temperature condition.

Special Information:

- Right hinging is standard.
Left hinging is available as a special order.
- Windowed door is standard.
Solid door is available as a special order.
- Pass-through design is available.



| Capacity and Weights | |
|-------------------------------------|--|
| Interior Capacity (PER COMPARTMENT) | |
| Fluid compartment | 30 1-liter bottles or 24 1-liter bags |
| Blanket compartment | 11.875 cubic feet (0.34 m ³) |
| Net Weight | 360 lb (163 kg) |
| Ship Weight | 468 lb (212 kg) |

| Electrical | |
|---|---|
| 120 V.A.C. — 60 Hz, 1 ph 1.92 kW, 16.0 Amps Safety Class I Equipment No Applied Parts Mode of Operation: Continuous | NEMA 5-20P 20A - 125V Plug Hospital Grade |
| 230 V.A.C. — 50/60 Hz, 1 ph 1.85 kW, 8.0 Amps Type B Equipment | BS 1363 Plug* (UK only) CEE 7/7* 220-230V Plug |

*Other international plugs are available, contact factory for more information.

| Options and Accessories | |
|-------------------------|----------|
| Built-in Trim Kit | 5013968 |
| Combination Lock | 5008361 |
| Leg Kit, 6" (152mm) | 5017084 |
| Lock for Door Handle | LK-22567 |


WarmWatch[®]

The optional WarmWatch[®] package features real-time monitoring for quick and easy visual temperature confirmation and ensures set-point accuracy is maintained. These temperatures are recorded and analyzed to provide convenient, reliable data analysis and trend graphing for the life of the warmer. WarmWatch includes the following:

PATENT PENDING



Dual Temperature Readout – Provides visual verification that the unit is keeping its contents to the proper set-point temperature.



Integrated USB Port – Mounted flush to the face of the control panel, this port provides easy access to stored data.



Reporting Capabilities – Recorded data can be uploaded and used to verify performance and report the temperature accuracy.

Contact your Entermics sales representative for more information



An ISO 13485:2003 certified company

Entermics Medical Systems - The Warming Company[®]
 PO Box 443 · Menomonee Falls WI 53052-0443
 W164 N9221 Water St · Menomonee Falls WI 53051
 Phone 262-251-8356 · 800-862-9276 · Fax 262-251-7067
 generalinfo@entermics.com
 www.entermics.com · www.ivnow.com