

6004

6000 Series Modular Cabinetry



Four Drawer, 24" (61cm) Base Cabinet



Standard Features

- 20 gauge steel construction
- High pressure laminate countertop with 4" (10.2cm) backsplash
- Full extension roller bearing drawer glides
- Interchangeable drawer fronts
- Drawer fronts available in all accent colors
- 3 year limited warranty

Optional Accessories

- **505** – Single drawer lock (*factory installed*)
- **507** – Additional Keys (x2)
- Antimicrobial Silver San Base Paint
- **025** – Custom drawer accent color

Specifications

Base cabinet only (including drawers):

- **Width:** 24" (61cm)
- **Height:** 34.5 (87.6cm)
- **Depth:** 18" (45.7cm)

Base cabinet with countertop:

- **Width:** 24" (61cm)
- **Height:** 35.875" (91.1cm) - does not include height of backsplash
- **Height:** 39.75" (101cm) - includes height of backsplash
- **Depth:** 19" (48.3cm)

Colors



6014

6000 Series Modular Cabinetry



Two Drawers and Two Doors, 24” (61cm) Base Cabinet



Standard Features

- 20 gauge steel construction
- High pressure laminate countertop with 4” (10.2cm) backsplash
- Commercial grade, adjustable, spring assisted door hinges
- Full extension roller bearing drawer glides
- Interchangeable drawer and door fronts
- Drawer/door fronts available in all paint colors
- 3 year limited warranty

Optional Accessories

- **505** – Single drawer lock (*Factory Installed Only*)
- **507** – Additional Keys (x2)
- Antimicrobial Silver San Base Paint
- **025** – Custom drawer accent color

Specifications

- **Base cabinet only (including drawers):**
 - **Width:** 24” (61.0cm)
 - **Height:** 34.5” (87.6cm)
 - **Depth:** 18” (45.7cm)
- **Base cabinet with countertop:**
 - **Width:** 24” (61.0cm)
 - **Height:** 35.875” (91.1cm) - does not include height of backsplash
 - **Height:** 39.75” (101.0cm) - includes height of backsplash
 - **Depth:** 19” (48.3cm)

Colors



6024

6000 Series Modular Cabinetry



Two Doors with Sink and Faucet, 24" (61cm) Base Cabinet



Standard Features

- 20 gauge steel construction
- Stainless steel sink with stopper basket
- Chicago faucet with wrist blade handles
- Seamless laminate countertop with 4" (10.2cm) backsplash
- Commercial grade, adjustable, spring assisted door hinges
- Interchangeable door fronts
- Available in all accent colors
- 3 year warranty

Optional Accessories

- **502** – Double door lock (*Factory Installed Only*)
- **507** – Additional keys (x2)
- Anti-microbial Silver San Base Paint
- **025** – Custom door front accent color

Specifications

- **Base cabinet only (with doors):**
 - **Width:** 24" (61.0cm)
 - **Height:** 34.5" (87.6cm)
 - **Depth:** 18" (45.7cm)
- **Base cabinet with countertop:**
 - **Width:** 24" (61.0cm)
 - **Height:** 35.875" (91.1cm) - does not include height of backsplash
 - **Height:** 39.75" (101.0cm) - includes height of backsplash
 - **Depth:** 19" (48.3cm)

Colors



6074

6000 Series Modular Cabinetry



24" (61cm) Modular Wall Cabinet

Standard Features



- 20 gauge steel construction
- Commercial grade, adjustable, spring assisted door hinges
- Adjustable shelf
- Interchangeable door fronts
- Wall mounting bracket
- Drawer fronts available in all accent colors
- 3 year limited warranty

Optional Accessories

- **502** – Double door lock (*Factory Installed Only*)
- **507** – Additional keys (x2)
- SilverSan Anti-microbial Paint
- **025** – Custom door front accent color

Specifications

- **Width:** 24" (61.0cm)
- **Height:** 20" (50.8cm)
- **Depth:** 11" (27.9cm)

Colors



6105

6100 Series Treatment and Supply Cabinets



Modular Treatment Cabinet and Overhead Cabinet with One Bottom Drawer and Door



Standard Features

- 20 gauge steel construction
- Removable, non-adjustable shelf in bottom section
- Two adjustable glass shelves in upper section
- Lock on upper door (with 2 keys)
- Heavy duty concealed door hinges
- Kydex counter top
- Adjustable leveling glides
- Door and drawers fronts available in all accent colors
- 3 year limited warranty

Optional Accessories

- **501** – Single door lock (*factory installed*)
- **505** – Single drawer lock (*factory installed*)
- **507** – Additional keys (x2)
- **025** – Custom door/drawer front accent color

Specifications

- **Width:** 20" (50.8cm)
- **Height:** 65" (165.1cm)
- **Depth:** 16.25" (41.3cm)

Colors



6117

6100 Series Treatment and Supply Cabinets



Modular Treatment Cabinet and Overhead Cabinet with Two Bottom Drawers and Doors



Standard Features

- 20 gauge steel construction
- One adjustable glass shelf in upper section
- Removable, non-adjustable shelf in bottom section
- Kydex top
- Lock on upper doors (with 2 keys)
- Heavy duty concealed door hinges
- Safety release latch on upper left door
- Adjustable leveling glides
- Door and drawer fronts available in all accent colors
- 3 year limited warranty

Optional Accessories

- **502** – Double door lock (*factory installed*)
- **505** – Single drawer lock (*factory installed*)
- **507** – Additional keys (x2)
- **025** – Custom door/drawer front accent color

Specifications

- **Width:** 32" (81.3cm)
- **Height:** 65" (165.1cm)
- **Depth:** 16.25" (41.3cm)

Colors



6120

6100 Series Treatment and Supply Cabinets



Modular Treatment Cabinet with Two Bottom Drawers and Doors



Standard Features

- 20 gauge steel construction
- Removable, non-adjustable shelf
- Kydex top with rail
- Heavy duty concealed door hinges
- Adjustable leveling glides
- Door and drawer fronts available in all accent colors
- 3 year limited warranty

Optional Accessories

- **502** – Double door lock (*factory installed*)
- **505** – Single drawer lock (*factory installed*)
- **507** – Additional keys (x2)
- **025** – Custom door/drawer front accent color

Specifications

- **Width:** 27" (68.6cm)
- **Height:** 33.5" (85.1cm)
- **Depth:** 16.25" (41.3cm)

Colors



6130

6100 Series Treatment and Supply Cabinets



Modular Treatment Cabinet with One Bottom Drawer and Two Doors



Standard Features

- 20 gauge steel construction
- One adjustable glass shelf in upper section
- Removable, non-adjustable shelf in bottom section
- Lock on upper doors (with 2 keys)
- Heavy duty concealed door hinges
- Kydex top
- Safety release latch on upper left door
- Adjustable leveling glides
- Door and drawer fronts available in all accent colors
- 3 year limited warranty

Optional Accessories

- **502** – Double door lock (*factory installed*)
- **505** – Single drawer lock (*factory installed*)
- **507** – Additional keys (x2)
- **025** – Custom door/drawer front accent color

Specifications

- **Width:** 25.25" (64.1cm)
- **Height:** 65" (165.1cm)
- **Depth:** 16.25" (41.3cm)

Colors



6204

6200 Series Treatment and Supply Cabinets



Modular Treatment Cabinet with Four Drawers



Standard Features

- 20 gauge steel construction
- Stainless steel push handle
- Kydex top with rail
- 2" (5.1cm) twin wheel carpet casters
- Drawer fronts available in all accent colors
- 3 year limited warranty

Optional Accessories

- **122** – Swivel casters 2" (set of 4)
- **505** – Single drawer lock (*factory installed*)
- **507** – Additional keys (x2)
- **025** – Custom drawer front accent color

Specifications

- **Width:** 25" (63.5cm)
- **Height:** 34.25" (87cm)
- **Depth:** 18" (45.7cm)

Colors



6214

6200 Series Treatment and Supply Cabinets



Modular Treatment Cabinet with Two Drawers and Two Doors



Standard Features

- 20 gauge steel construction
- Stainless steel push handle
- Kydex top with rail
- 2" (5.1cm) twin wheel carpet casters
- Heavy duty concealed door hinges
- Full extension roller bearing drawer glides
- Drawer and drawer fronts available in all accent colors
- 3 year limited warranty

Optional Accessories

- **122** – Swivel casters 2" (set of 4)
- **502** – Double door lock (*factory installed*)
- **505** – Single drawer lock (*factory installed*)
- **507** – Additional keys (x2)
- **025** – Custom drawer front accent color

Specifications

- **Width:** 25" (63.5cm)
- **Height:** 34.25" (87cm)
- **Depth:** 18" (45.7cm)

Colors



6620

6200 Series Mobile Treatment and Supply Cabinets



Modular Special Procedures Cart with Two Drawers



Standard Features

- 20 gauge steel construction
- Stainless steel push handle
- Kydex top with rail
- 2" (5.1cm) twin wheel carpet casters
- Drawer fronts available in all accent colors
- 3 year limited warranty

Optional Accessories

- **116** – Swivel casters locking 60mm (factory installed) (set of 5)
- **505** – Single drawer lock (factory installed)
- **507** – Additional keys (x2)
- **025** – Custom drawer front accent color

Specifications

- **Width:** 20" (50.8cm)
- **Height:** 33.5" (85.1cm)
- **Depth:** 16.25" (41.3cm)

Colors



7142

7000 Series Modular Cabinets



Storage Cabinet with Lockable Upper Doors, Two Bottom Drawers, and Two Doors



Standard Features

- 20 gauge steel construction
- Removable, non-adjustable shelf in lower section
- Heavy duty concealed door hinges
- Standard lock on upper right door
- Safety release lever on upper left door
- Adjustable leveling glides
- Door and drawer fronts available in all accent colors
- 3 year limited warranty

Optional Accessories

- **070** – 110 Volt Light
- **071** – 220 Volt Light
- **502** – Double door lock (*factory installed*)
- **505** – Single drawer lock (*factory installed*)
- **507** – Additional keys (x2)
- **025** – Custom door/drawer front accent color

Specifications

- **Width:** 31.5" (80cm)
- **Height:** 66.5" (168.9cm)
- **Depth:** 15.5" (39.4cm)

Colors



SS7816

SS7000 Series Cabinets



Stainless Steel Storage and Supply Cabinet with Five Adjustable Stainless Steel Shelves and Two Glass Sliding Doors



Standard Features

- Heavy duty, all-welded stainless steel construction
- Five removable, adjustable stainless steel shelves
- Full height, stainless steel sliding doors with glass panes
- Recessed finger pulls on doors for ease of operation
- Adjustable leveling guides
- 3 year limited warranty

Optional Accessories

- **503** – Sliding door lock (*factory installed*)
- **507** – Additional keys (x2)

Specifications

- **Width:** 47" (119.4cm)
- **Height:** 84.25" (214cm)
- **Depth:** 15.875" (40.3cm)



SS7834

SS7000 Series Cabinets



Stainless Steel Storage and Supply Cabinet with Five Adjustable Stainless Steel Shelves and Two Glass Hinged Doors



Standard Features

- Heavy duty, all-welded stainless steel construction
- Five removable, adjustable stainless steel shelves
- Full height, stainless steel doors with glass panes
- Convenient T-handle door latches with lock
- Adjustable leveling guides
- 3 year limited warranty

Optional Accessories

- **507** – Additional keys (x2)

Specifications

- **Width:** 35.875" (91.1cm)
- **Height:** 77.25" (196.2cm)
- **Depth:** 16" (40.3cm)

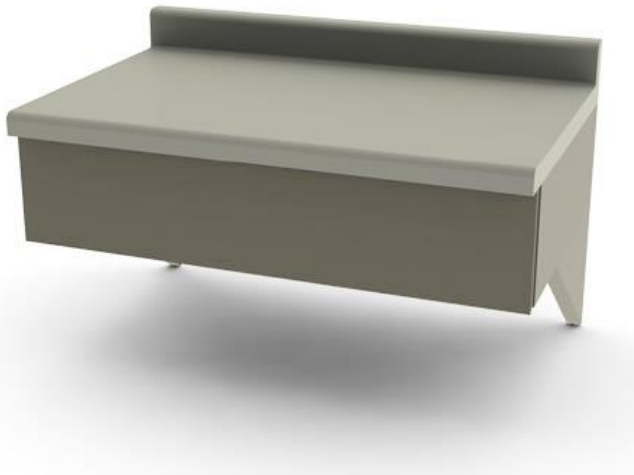


6052

6000 Series Modular Cabinetry



30" (76.2cm) Modular Writing Desk Unit with Drawer



Standard Features

- 20 gauge steel construction
- Full extension roller bearing drawer glides
- Seamless laminate countertop with backsplash
- Pre-drilled mounting brackets included
- Interchangeable drawer fronts
- Drawer fronts available in all accent colors
- 3 year limited warranty

Optional Accessories

- **505** – Single drawer lock (*Factory Installed Only*)
- **507** – Additional keys (x2)
- SilverSan Antimicrobial Paint
- **025** – Custom drawer front accent color

Specifications

- **Width:** 30" (76.2cm)
- **Height:** 8.125" (20.6cm) (12" High (30.5cm) including backsplash)
- **Depth:** 19" (48.3cm) to front of countertop

Colors



6004 Wooden Cabinetry

6000 Series Modular Cabinetry



Four Drawer, 24" (61cm) Base Cabinet



Accessories shown:
Seamless laminate countertop with 4" (10.2cm) backsplash

Standard Features

- Interior and exterior laminate
- Moisture and heat resistant
- Full extension roller bearing drawer glides
- 3 year limited warranty

Optional Accessories

- **610** – 49" Countertop with Sink cutout, pairs with 6014, 6024
- **620** – 25" Countertop with Sink cutout
- **625** – 25" Countertop without Sink cutout
- **636** – Sink assembly with Bowl, Faucet, and Strainer

Specifications

Base cabinet only (including drawers):

- **Width:** 24" (61cm)
- **Height:** 34.5 (87.6cm)
- **Depth:** 18" (45.7cm)

Base cabinet with countertop:

- **Width:** 24" (61cm)
- **Height:** 35.875" (91.1cm) - does not include height of backsplash
- **Height:** 39.75" (101cm) - includes height of backsplash
- **Depth:** 19" (48.3cm)

Colors Cabinetry

- White Cypress
- Fusion Maple
- Wild Cherry
- Asian Night

Countertop

- Titanium EV
- Gesso Tracery
- Mystique Mount
- Tumbled Mosaic
- Classic Linen
- Bronze Legacy
- Urban Iron



6014 Wooden Cabinetry

6000 Series Modular Cabinetry



Two Doors, 24" Base Cabinet (61cm) - Wooden Cabinetry



Accessories shown:
Seamless laminate countertop with 4" (10.2cm) backsplash

Standard Features

- Full extension roller bearing drawer glides
- Commercial grade, adjustable, spring assisted door hinges
- Interior and exterior laminate
- Moisture and heat resistant
- 3 year limited warranty

Optional Accessories

- **610** – 49" Countertop with Sink cutout, pairs with 6024, 6004
- **620** – 25" Countertop with Sink cutout
- **625** – 25" Countertop without Sink cutout
- **636** – Sink assembly with Bowl, Faucet, and Strainer

Specifications

- **Base cabinet only (including drawers):**
 - **Width:** 24" (61.0cm)
 - **Height:** 34.5" (87.6cm)
 - **Depth:** 18" (45.7cm)
- **Base cabinet with countertop:**
 - **Width:** 24" (61.0cm)
 - **Height:** 35.875" (91.1cm) - does not include height of backsplash
 - **Height:** 39.75" (101.0cm) - includes height of backsplash
 - **Depth:** 19" (48.3cm)

Colors Cabinetry

- White Cypress
- Fusion Maple
- Wild Cherry
- Asian Night

Countertop

- Titanium EV
- Gesso Tracery
- Mystique Mount
- Tumbled Mosaic
- Classic Linen
- Bronze Legacy
- Urban Iron



6024 Wooden Cabinetry

6000 Series Modular Cabinetry



Two Doors, 24" Base Cabinet (61cm)



Accessories shown:
 -636 Sink assembly
 -620 Seamless laminate countertop with 4" (10.2cm) backsplash

Standard Features

- Interior and exterior laminate
- Commercial grade, adjustable, spring assisted door hinges
- Moisture and heat resistant
- 3 year warranty

Optional Accessories

- **610** – 49" Countertop with Sink cutout, pairs with 6014, 6004
- **620** – 25" Countertop with Sink cutout
- **625** – 25" Countertop without Sink cutout
- **636** – Sink assembly with Bowl, Faucet, and Strainer

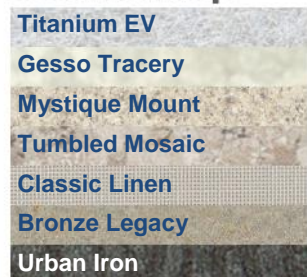
Specifications

- **Base cabinet only (with doors):**
 - **Width:** 24" (61.0cm)
 - **Height:** 34.5" (87.6cm)
 - **Depth:** 18" (45.7cm)
- **Base cabinet with countertop:**
 - **Width:** 24" (61.0cm)
 - **Height:** 35.875" (91.1cm) - does not include height of backsplash
 - **Height:** 39.75" (101.0cm) - includes height of backsplash
 - **Depth:** 19" (48.3cm)

Colors Cabinetry



Countertop



6052 Wooden Cabinetry

6000 Series Modular Cabinetry



30" (76.2cm) Modular Writing Desk Unit with Drawer



Accessories shown:
Seamless laminate countertop with 4" (10.2cm) backsplash

Standard Features

- Full extension roller bearing drawer glides
- Pre-drilled mounting brackets included
- Interior and exterior laminate
- Moisture and heat resistant
- 3 year limited warranty

Optional Accessories

- 630 – 30.5" Countertop

Specifications

- **Width:** 30" (76.2cm)
- **Height:** 8.125" (20.6cm) (12" High (30.5cm) including backsplash)
- **Depth:** 19" (48.3cm) to front of countertop

Colors Cabinetry

White Cypress

Fusion Maple

Wild Cherry

Asian Night

Countertop

Titanium EV

Gesso Tracery

Mystique Mount

Tumbled Mosaic

Classic Linen

Bronze Legacy

Urban Iron



6074 Wooden Cabinetry

6000 Series Modular Cabinetry



48" (76.2cm) Modular Wall Cabinet



Standard Features

- Commercial grade, adjustable, spring assisted door hinges
- Adjustable shelf
- Wall Mounting Bracket
- Interior and exterior laminate
- Moisture and heat resistant
- 3 year limited warranty

Optional Accessories

Custom countertops and cabinetry options are available. Please contact UMF Medical if you are interested.

Specifications

- **Width:** 48" (61.0cm)
- **Height:** 20" (50.8cm)
- **Depth:** 11" (27.9cm)

Colors Cabinetry

White Cypress

Fusion Maple

Wild Cherry

Asian Night

Countertop

Titanium EV

Gesso Tracery

Mystique Mount

Tumbled Mosaic

Classic Linen

Bronze Legacy

Urban Iron

